



MORE THAN JUST FOOTBALL
SUNDAY 26TH JULY – THURSDAY 30TH JULY 2026





TOURNAMENT DETAILS 2026

GIRLS AGE GROUPS

JUNIOR SECTION - Players born on or after 1st January 2012

PREMIER SECTION - Players born on or after 1st January 2010

The 2026 SuperCupNI will see some of the world's best youth football teams descend upon the Antrim and Newtownabbey area for a football extravaganza.

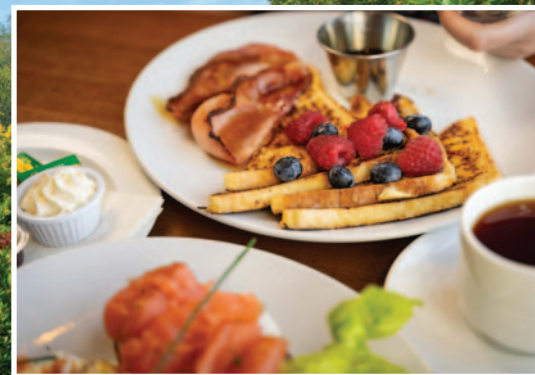
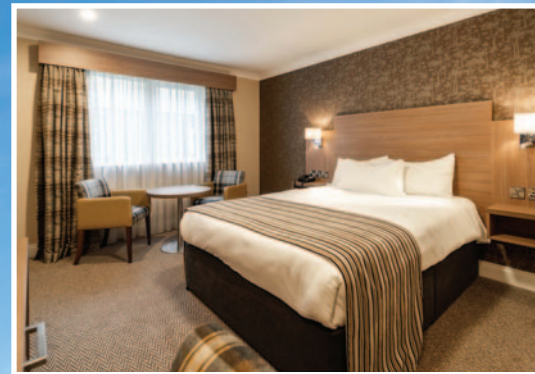
VENUES/ LOCATION

The tournament will take place across four venues in the Antrim and Newtownabbey area including the home of NI Football League side Ballyclare Comrades. The matches will take place on four quality pitches, one 3G pitch and three high quality grass pitches.



ACCOMMODATION

Visiting teams will stay in high quality accommodation including local hotels (three and four star) and top-quality residential accommodation in the area.



TOURNAMENT FORMAT

Games in both girls'
sections are 35
minutes each way.

35

The tournament starts with the Welcome Parade and Opening Ceremony in Coleraine on Sunday 26th July.

4

Eight teams will play four matches in total, with three group games initially from Monday to Wednesday. On Thursday all teams will play in a final.

The SuperCupNI Junior and Premier Cup finals will be played at the state of the art Dixon Park 3G pitch, the home of NIFL Championship Club Ballyclare Comrades.



FEATURES

- Entry into one of the world's most prestigious and longest running elite youth football tournaments.
- Compete against world class teams including Premier League Academy sides and national teams.
- All matches are streamed live.
- All teams will stay for a minimum of four nights, full board.
- All teams from outside the island of Ireland are collected at airport terminal or ferry port by a tournament courier, who is their guide for the week.
- Opportunities to visit the world famous Lough Neagh, Antrim Castle and Gardens and enjoy some shopping in The Junction shopping outlet centre.





PRICING

- For all entries external to Northern Ireland, a bespoke calculation for your proposed costs for the 2026 tournament can be facilitated.
- When contacting for costs, it would be helpful to have the following information:
 - Number of players
 - Number of adults
 - Date of arrival
 - Date of departure
 - Airport/ferry – point of arrival/departure

All enquiries relating to costs regarding entry to the girls tournament please contact Alfie Wylie: alfiewylie@supercupni.com

ENTRY INFO



- The deadline for applications for the girls' tournament is Monday 1st December 2025.
- Upon application forms being received, £200 UK Sterling entry fee must accompany all entries, with bank details shared by the tournament organisers.
- If entry is confirmed, a deposit of £2000 (UK Sterling) is payable by Friday 13th March 2026 towards the cost of the team's accommodation. Teams not having paid this deposit will not be included in the draw.
- Completed application forms should be forwarded to alfiewylie@supercupni.com as detailed on the application form.